

My Account

My Account (/openid-connect/sams-sigma/login-redirect?prompt=login&openid_connect_destination=/content/ijstrfin/19/4/94&custom_message=You%27ll%20ne

Find topics, articles or authors...

Selected Topic: All topics

Key Economic Variables for the Housing Market and Consumer Finance

Elen Callahan

The Journal of Structured Finance Winter 2014, 19 (4) 94 - 99

DOI: 10.3905/jsf.2014.19.4.094

- Download PDF
- Add to Favorites
- Share
- Labels
- Cite
- Alerts



The Journal of Structured Finance Vol 19 Issue 4

(/content/ijstrfin/19/4)
 Volume 19, Issue 4
 Winter 2014 (/content/ijstrfin/19/4)

(/content/ijstrfin/19/4)

Log in (/openid-connect/sams-sigma/login-redirect?prompt=login&openid_connect_destination=/content/ijstrfin/19/4/94) to access this content or Request a Demo (/Request-Demo)



Log in (/openid-connect/sams-sigma/login-redirect?prompt=login&openid_connect_destination=/content/ijstrfin/19/4/94)

Request a Demo (/Request-Demo)

Focus (/highwire_display/entity_view/node/132225/content_tabs)

- Article
- Authors

- Download PDF
- Add to Favorites
- Share
- Labels
- Cite
- Alerts

Back to top 

Related Topics

Risk Management in Theory and Practice

Credit Risk Management

Regulation, Taxation, Governance, and Compliance

Economics and Financial History

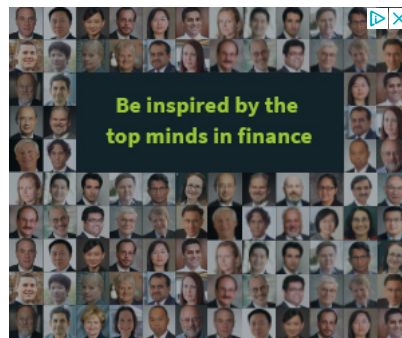
Asset Classes

Fixed Income and Structured Finance

ABS (Asset-Backed Securities)

Alternative Investments

Real Estate and Real Assets



Locations

New York

41 Madison Avenue
20th Floor
New York, NY 10010
646 931 9045

London

One London Wall
London, EC2Y 5EA
0207 139 1600

Hong Kong

21/F Cityplaza Three,
14 Taikoo Wan Road,
Taikoo

Explore our Research

By Topic

[Portfolio Management in Theory and Practice \(/topic/portfolio-management-theory-and-practice\)](/topic/portfolio-management-theory-and-practice)
[Quantitative Finance \(/topic/quantitative-finance\)](/topic/quantitative-finance)
[Economics and Financial History \(/topic/economics-and-financial-history\)](/topic/economics-and-financial-history)
[Risk Management in Theory and Practice \(/topic/risk-management-theory-and-practice\)](/topic/risk-management-theory-and-practice)
[Asset Classes \(/topic/asset-classes\)](/topic/asset-classes)
[Regulation, Taxation, Governance, and Compliance \(/topic/regulation-taxation-governance-and-compliance\)](/topic/regulation-taxation-governance-and-compliance)

By Journal

[Portfolio Management \(/content/iijporgmt\)](/content/iijporgmt)
[Financial Data Science \(/content/iijjfds\)](/content/iijjfds)
[Impact & ESG Investing \(/content/pmrjesg\)](/content/pmrjesg)
[Fixed Income \(/content/iijfixinc\)](/content/iijfixinc)
[Investing \(/content/iijinvest\)](/content/iijinvest)
[Derivatives \(/content/iijderiv\)](/content/iijderiv)
[Alternative Investments \(/content/iijaltinv\)](/content/iijaltinv)
[Retirement \(/content/iijretire\)](/content/iijretire)
[Wealth Management \(/content/iijwealthmgmt\)](/content/iijwealthmgmt)

[Beta Investment Strategies \(/content/ijjindinv\)](/content/ijjindinv)

[Structured Finance \(/content/ijjstrfin\)](/content/ijjstrfin)

[Trading \(/content/ijjtrade\)](/content/ijjtrade)

[Private Equity \(/content/ijjpriveq\)](/content/ijjpriveq)

[Practical Applications \(/pa-reports\)](/pa-reports)

© 2023 With Intelligence Ltd (<https://withintelligence.com/>) | All material subject to strictly enforced copyright laws.

[Cookies \(https://www.pageantmedia.com/cookies/\)](https://www.pageantmedia.com/cookies/)

[Code of ethics \(/code-of-ethics\)](/code-of-ethics)

[Terms & conditions \(https://www.pageantmedia.com/terms/\)](https://www.pageantmedia.com/terms/)

[Privacy policy \(https://withintelligence.com/privacy/\)](https://withintelligence.com/privacy/)